

# StyleSpeak<sup>TM</sup>

The salon & spa journal



Vol.9 ■ No.3 ■ 160 pgs ■ May 2016 ■ ₹100

## FACE 2 FACE

Tete-a-tete with co-founder of Fat Mu, Natasha Nischol

## Design Dilemma

Solve your design dilemma

## ICONIC SPACES

Award-winning salons to be inspired by

## Know Your Space

Decoding what it takes to achieve a perfect salon.

## Inspired Design

French architect Joshua Florquin shares his design concepts

## Interior Insight

Ideal insight for your salon space

## ON-TREND INTERIORS

Catch up with fresh salon interior trends

the  
design  
issue



# Designing your Salon

Revamp your salon space with these expert tips

Words | Bindu Gopal Rao



While a salon today is being perceived as a lifestyle space, there is an increased focus on ensuring that the ambience is inviting and pleasing and yet practical and functional. To achieve this dual requirement, it is imperative that the salon is designed right. Naturally the role of architects in salon design becomes very important in achieving this dual purpose.

## ARCHITECTURE MATTERS

Whether designing a new salon or a revamping an existing salon, it is important that salon architecture is done right. "When you are designing a new

salon or a revamping an existing salon, from that enticing front window display, to the waiting reception area, to the actual room themselves, always keep in mind that it should strive to incorporate the latest and emerging trends into a space that should stand them in good stead for the next several years. Spending time, money and energy on revamping or designing a new salon may sound like a challenge, but if you are open to the thought of restyling and designing, it becomes such an easy job," says **Rahul Gupta, Interior Designer.**

**Sarvesh Chadha, Architect, Managing Director, Grey Ink Studio, New Delhi**



avers, "it is imperative to consider the history of the building before commencement of any plan. The designer needs to be aware of previous renovations, if any. The amount of space available along with the lighting has to be taken into consideration. Before starting with the design, examine the requirement of client and blend it with the latest trends to bring out the best in terms of aesthetics and a dynamic character." Selecting a theme is a fundamental task.

"The width of the space allocated for the main salon area is crucial. The width has to be a minimum of four meters. To avoid the tunnel effect, the mirrors (preferably starting at counter top level reaching till false ceiling) have to be off-set in plan, rather than placing them in a linear fashion. The end wall can be a feature wall," says **Anil Bhaskaran, MD & Chief Architect, Ideacentre Architects, Bangalore.**

### TREND ALERT

In designing a new salon, the first thing that you should keep in mind is that how

you are utilizing your space by making it trendy. It determines how much furniture you can have, which colour schemes work best and how lighting will impact your space. "If you have a small space, then overcrowding and noise can be an issue to think. Use wider mirrors instead of offset mirrors which help to create the illusion of space. You can also use floor

it creates comfort for both your clients and your stylist professionals. "The raw industrial cafe like look is really trending these days among the youth. Consider combining it with a touch of retro aspect, which can be really inspiring and highlighting the trends of the 60's. After all, old trends are making a comeback," opines Sarvesh.



tiles in an elegant diamond pattern as this will make the floor appear wider. If you have larger salon area, than it can create a problem of emptiness. Create effective floor plans by deciding the number of wash units you want to fit and use plinths that introduce different floor levels to define separate areas," says Rahul.

"Lighting inside the salon has a very important role to play in the selection of colour for hair. From this point of view, maximum amount of natural light should be allowed inside. Installation of large glass panes on the external wall will be helpful to achieve this. However, to achieve privacy, the glass can be frosted," says Anil. If you are starting a salon or just revamping it, selection of right furniture is very important because

### FURNITURE & MORE

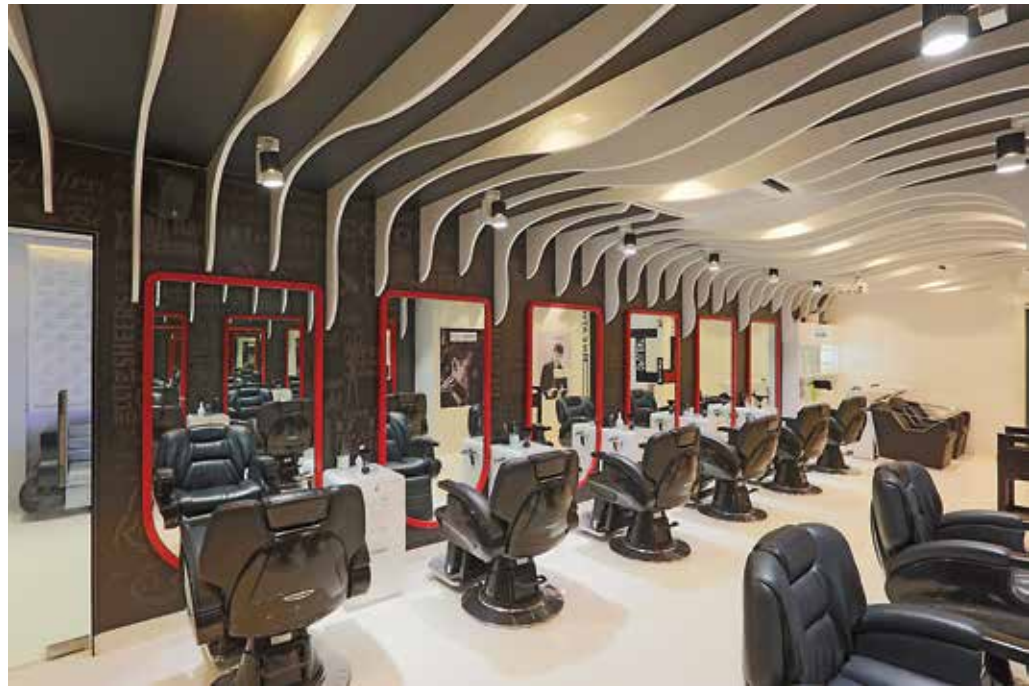
Furniture should be decided according to the space area of the salon. It should be accessible in all sorts of styles that match with the colour theme and layout. Like if you have a sofa in the waiting area than it should match with the colour scheme of the walls. It is important that the furniture you are using for your salon should be made with the best quality materials which provide hygienic surfaces on which to work on. "Choose two or three colours and use these colours throughout the salon like furniture, equipment, frames and walls. Instead of using dark colours use bright colours which make your salon ambiance fresh. You can also use artificial and real potted flowers that match with the colour scheme of your

salon. If you are revamping your salon than new lighting fixtures, wallpaper and art are the best ideas. It can refresh the space and allow you to remain on the top of the trends without making a huge commitment. Placing a television is also a good idea. It will help to engage your clients," says Rahul.

**CHALLENGE FACTOR**

The most common problem which architects generally face is making the most out of the small space, but doing few minor changes which are mentioned above you can convert your clutter salon into the comfortable environment. Design your salon according to the services you are providing to your clients. Wiring is the barrier that salon professionals faced. It is as much a safety as it is an aesthetic one. No one wants messy wired for their salon but it needs to be setup for a safety hazard. Lighting is one the main issue in designing or revamping the salon. Proper placement of lighting is very important.

Designers usually miss the angles for perfect lighting which ruin the ambience



of the salon. Challenges in revamping an existing salon require that you locate the wet area near the existing plumbing shaft. "We cannot run the plumbing line too far. Hence wet areas like shampooing, hair washing, will remain in more or less the same location, we have work around the other requirements



around this space. Basically we have to work around the existing services without altering much. Likewise there are challenges in new design as well. Previously it was only a hair care salon, but now it is a one stop fashion destination. Salons have to more open and at the same time provide privacy to the needed customers. The need is to integrate technology into the design, air conditioning and music system," says **Architect Harshavardhana H N, Harshavardhana Architects Engineers Interior Design. SS**



Disclaimer: All images used are for representative purposes only